

CATALOG

1

9

8

4

We've got the most going for us.

MATTEL ELECTRONICS[®]

MATTEL ELECTRONICS® SOFTWARE DIRECTORY

TITLE	INTELLIVISION	ENTERTAINMENT COMPUTER SYSTEM	ATARI 2600	IBM PC	APPLE II APPLE plus APPLE IIe	COLECOVISION
ADVANCED DUNGEONS & DRAGONS™™™™ CARTRIDGE	■					
ADVANCED DUNGEONS & DRAGONS™™™™ TOWER OF MYSTERY CARTRIDGE	□		□			
ADVANCED DUNGEONS & DRAGONS™™™™ TREASURE OF TARMIN™™™™ CARTRIDGE	■		□			
ADVENTURES OF TRON			■			
AIR RAIDERS			■			
ALL STAR MAJOR LEAGUE BASEBALL	□					
B-17 BOMBER*	■					
BOMB SQUAD*	■					
BUMP 'N' JUMP	■		■			□
BURGERTIME	■		■	■	■	□
BUZZ BOMBERS	■					
FLINTSTONES KEYBOARD FUN		□				
GAME FACTORY		□				
GO FOR THE GOLD	□					
HEAVY ARTILLERY					□	
HOVER FORCE 3D	□					
ILLUSIONS	□					□
KOOL-AID MAN	■		■			
LOCK 'N' CHASE	■		■		■	
MAJOR LEAGUE BASEBALL	■					
MASTERS OF THE UNIVERSE THE POWER OF HE-MAN	■		■			□
MELODY BLASTER†		■				
MIND STRIKE		■				
MISSION X	■					
MOTOCROSS	■					
"MR. BASIC MEETS 'BITS 'N' BYTES"		■				
NBA BASKETBALL	■					
NFL FOOTBALL	■					
NHL HOCKEY	■					
NIGHT STALKER	■			■	■	
NUMBER JUMBLE		□				
PARTY LINE	□					
PGA GOLF	■					
PINBALL	■					
PIRATES OF THE NILE					□	
SCOOBY-DOO'S MAZE CHASE		■				
SHARK! SHARK!	■					
SPACE SPARTANS*	■					
SUPER CHALLENGE BASEBALL			■			
SUPER CHALLENGE FOOTBALL			■			
SUPER NASL SOCCER	□	□				
SUPER NFL FOOTBALL		□				
THE JETSON'S WAYS WITH WORDS		■				
THUNDER CASTLE	□					
TRON DEADLY DISCS	■		■			
TRON MAZE-A-TRON	■					
TRON SOLAR SAILER*	■					
U.S. SKI TEAM SKIING	■					
WORLD SERIES MAJOR LEAGUE BASEBALL		■				

* for use with Intellivoice Voice Synthesis Module
 □ under development for 1984
 † for use with Intellivision Music Synthesizer and Computer Adaptor
 ■ currently available at retail

**ADVANCED DUNGEONS & DRAGONS and TREASURE OF TARMIN are trademarks owned by and used under license from TSR, Inc. This Cartridge is approved by TSR, Inc., the publisher of the 'Fantasy Role-Playing Games' sold under the trademark ADVANCED DUNGEONS & DRAGONS™. ©1982 TSR, Inc. All Rights Reserved.

MATTEL ELECTRONICS[®]

INTELLIVISION[®]

INTELLIVISION[®] II Master Component

INTELLIVISION[®] System Changer

INTELLIVISION[®] Entertainment Computer System



INTELLIVISION® ENTERTAINMENT COMPUTER SYSTEM.

From the beginning, Intellivision has been way ahead of the game in home video technology.

Now we've taken Intellivision even further. With new peripheral hardware and software to expand Intellivision into a home video system of the future.

The Intellivision® Entertainment Computer System.

A system that brings the fun of music and the magic of computer to the home video screen.* An entertaining new way to experience the world of computers. Learn to read and compose music. Or play super-advanced video games.



INTELLIVISION® II MASTER COMPONENT

The action is realistic. The graphics exciting. The games challenging. Intellivision continues to be one of the most sophisticated home video game systems ever created.

Intellivision II is lighter and more streamlined than the original Master Component. The hand controllers are completely detachable and feature longer cords for added convenience. And since Intellivision II is compatible with all the Intellivision game cartridges, it still plays the same exciting games.**

But great games are only the beginning.

You can expand Intellivision into an advanced Entertainment Computer System, simply by adding a variety of peripherals. Start with Intellivision II or the original Master Component and go as far as your imagination will take you.

There's the System Changer that lets your Intellivision system play Atari† 2600 compatible games.‡ And our new Computer Keyboard with adaptor that turns Intellivision into a home computer. You can also plug in the Music Synthesizer to the adaptor to experience the world of music.

Because when you start with Intellivision II, the fun never ends.

INTELLIVISION® SYSTEM CHANGER

Now Intellivision owners have the best of both worlds. Because now there's a way to plug Atari† 2600 compatible games into your Intellivision‡ system.

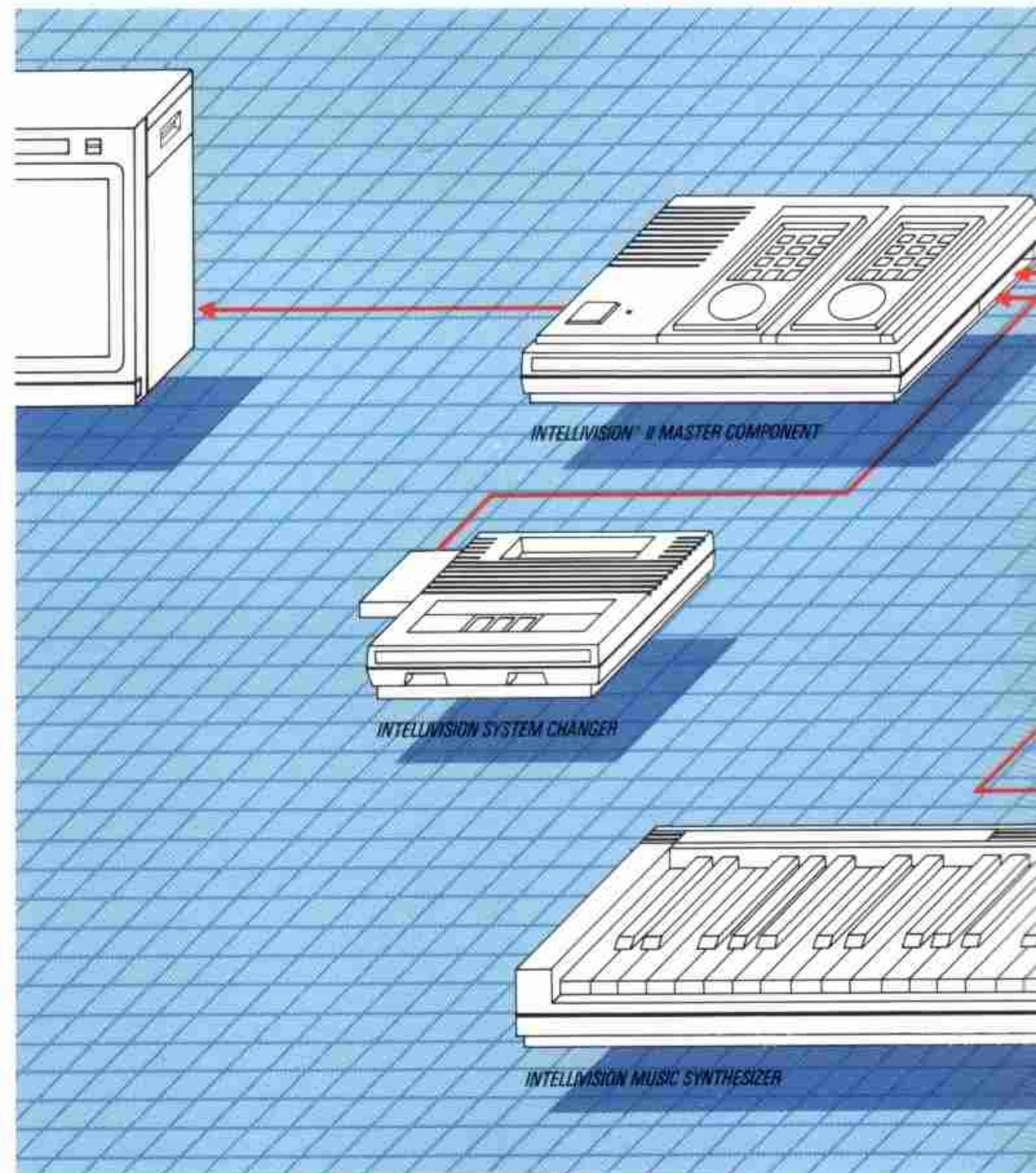
Just plug in our System Changer to the Intellivision Master Component‡ to accept Atari 2600 compatible cartridges. That means Intellivision owners can enjoy the entire library of Atari compatible games, including Activision, Imagic, M Network and others.

Now Atari owners can finally upgrade to Intellivision, without leaving all their Atari 2600 cartridges behind.

The System Changer has many of the same features as the Atari 2600. Like left and right difficulty switches, plus a color/black and white switch. You can even plug in the Atari joystick, or other compatible joysticks.

Put the System Changer together with Intellivision‡ and you've got access to the largest home video game library available anywhere. Now Intellivision plays the most games and the best games.

THE ENTERTAINMENT



THE COMPUTER MODULE

Now you can turn Intellivision into an entertainment computer system for the whole family. With our new Intellivision Computer Adaptor and Computer Keyboard, sold together as the Intellivision Computer Module.

COMPUTER ADAPTOR

The Intellivision Computer Adaptor simply plugs into any Intellivision Master Component to unlock the power of its 16-bit microprocessor. The adaptor features a simple BASIC program

COMPUTER KEYBOARD

The Intellivision Computer Keyboard looks just like a standard typewriter keyboard. With 49 keys to give you a complete alphanumeric input device.

It plugs directly into the Computer Adaptor and is fully programmable. Since simple BASIC is already built into the system, the Computer Keyboard can be programmed to perform simple home computer functions.

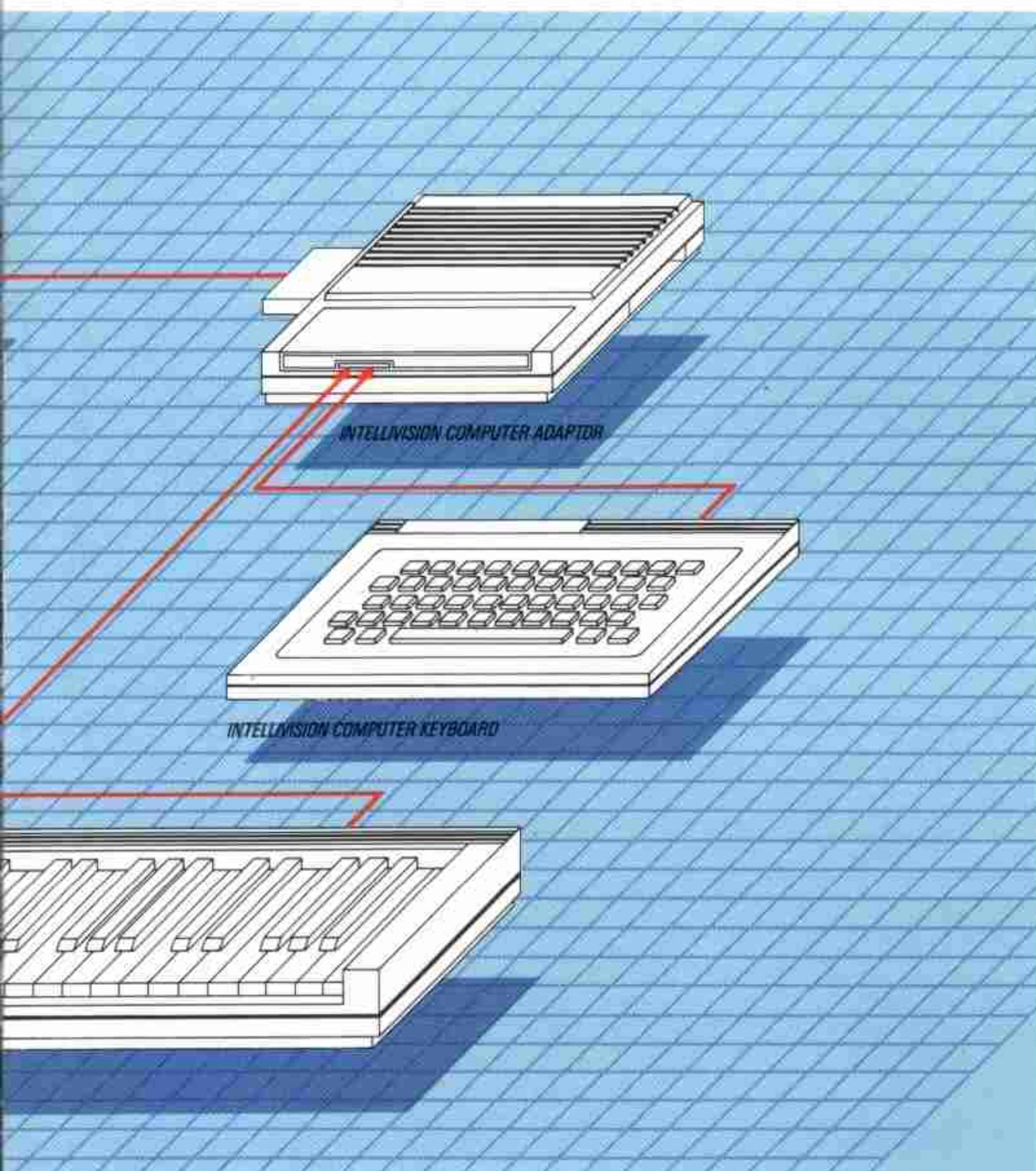
The unique color-coded graphics approach to teaching BASIC programming can make learning as entertaining as a game. It also works with fun educational games that turn your computer into a full-time tutor.

The Intellivision Keyboard even makes playing more advanced, with a whole new generation of super games (sold separately). Video games you can modify yourself and the most advanced graphics on Intellivision yet.

language built right in. And 2K RAM to expand the Intellivision memory. It even expands the sound capabilities of Intellivision.

But the real power of the Computer Adaptor is its ability to accept Intellivision peripherals. Like our Computer Keyboard that turns Intellivision into a fun family computer. Or our Music Synthesizer (sold separately) that makes learning music as easy as playing games.

COMPUTER SYSTEM



INTELLIVISION® MUSIC SYNTHESIZER. NOW LEARNING MUSIC CAN BE ALL FUN AND GAMES.

Learning and playing music can now be as fun and easy as playing a video game.

And that's exactly what our new Intellivision Music Synthesizer is all about.

It's a full size, 49-key music keyboard. With the same look, feel and touch as a real organ keyboard. Which makes it all the easier for kids and adults to apply their Intellivision skills directly to a piano or organ.

Together with the Intellivision Computer Adaptor[△] and Master Component, the keyboard becomes a six-note, polyphonic synthesizer. A unique audio/video environment that lets any member of the family learn to read music. Compose their own melodies. Even learn to play their favorite songs by playing a video game.

The Intellivision Music Synthesizer. It'll have you playing music in no time flat.



*When used with the music synthesizer or computer module, sold separately.

†Except the Electric Company™ Word Fun™ cartridge.

‡Trademark of Atari, Inc.

‡Intellivision™ Model #2609 requires factory modification.

△Available only with Computer Keyboard.

Music Synthesizer and cartridge each sold separately.

INTELLIVISION® COMPUTER SOFTWARE

Mattel Electronics has earned a reputation for developing software programs that lead the industry in outstanding graphics, realistic action and sophisticated game play.

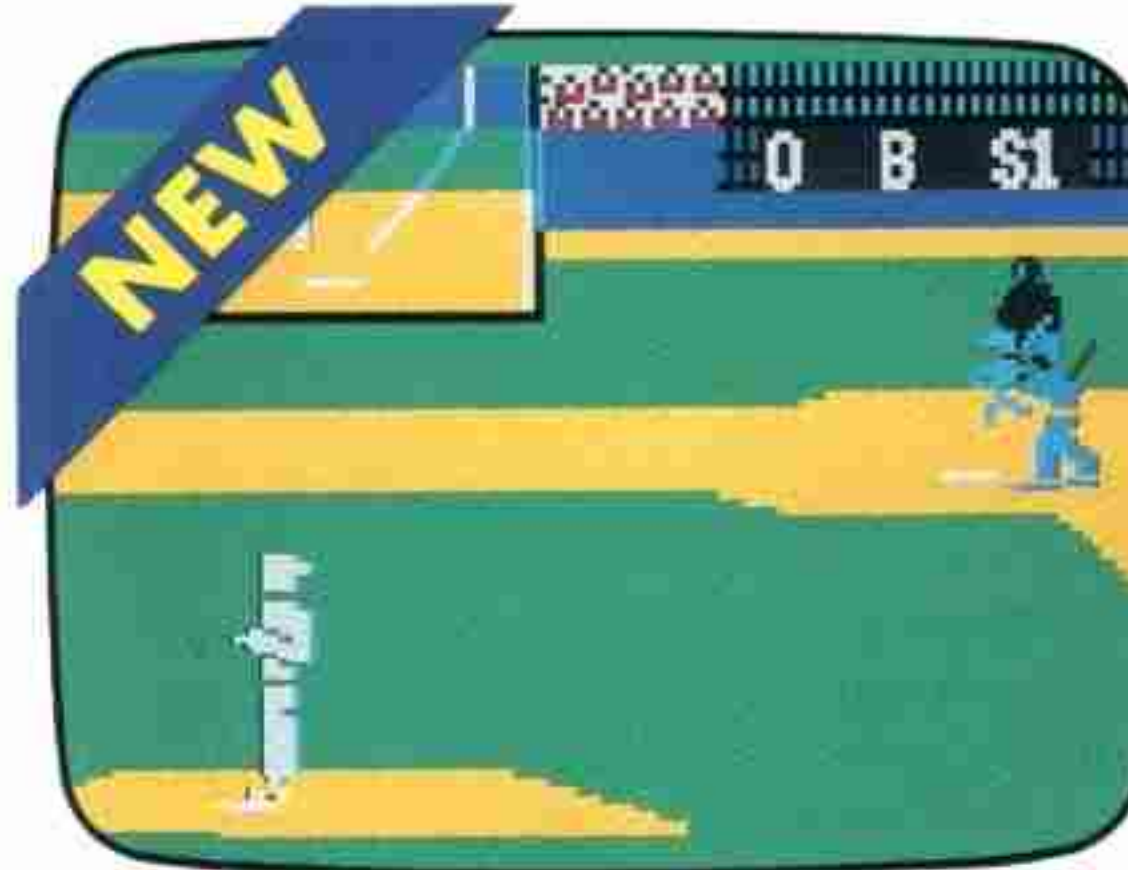
And, quite frankly, the Intellivision® software for the Entertainment Computer System is some of the best we've ever written.

Choose from a variety of super video games, fun computer programming games, an innovative musical game and entertaining educational games. And most games are user-modifiable. So you can make them as easy or as difficult as you want.



MR. BASIC MEETS BITS 'N' BYTES™ 4536

Use the computer keyboard or hand controllers as you learn BASIC programming with a choice of the cannons, vampire bats or Mr. Basic games.



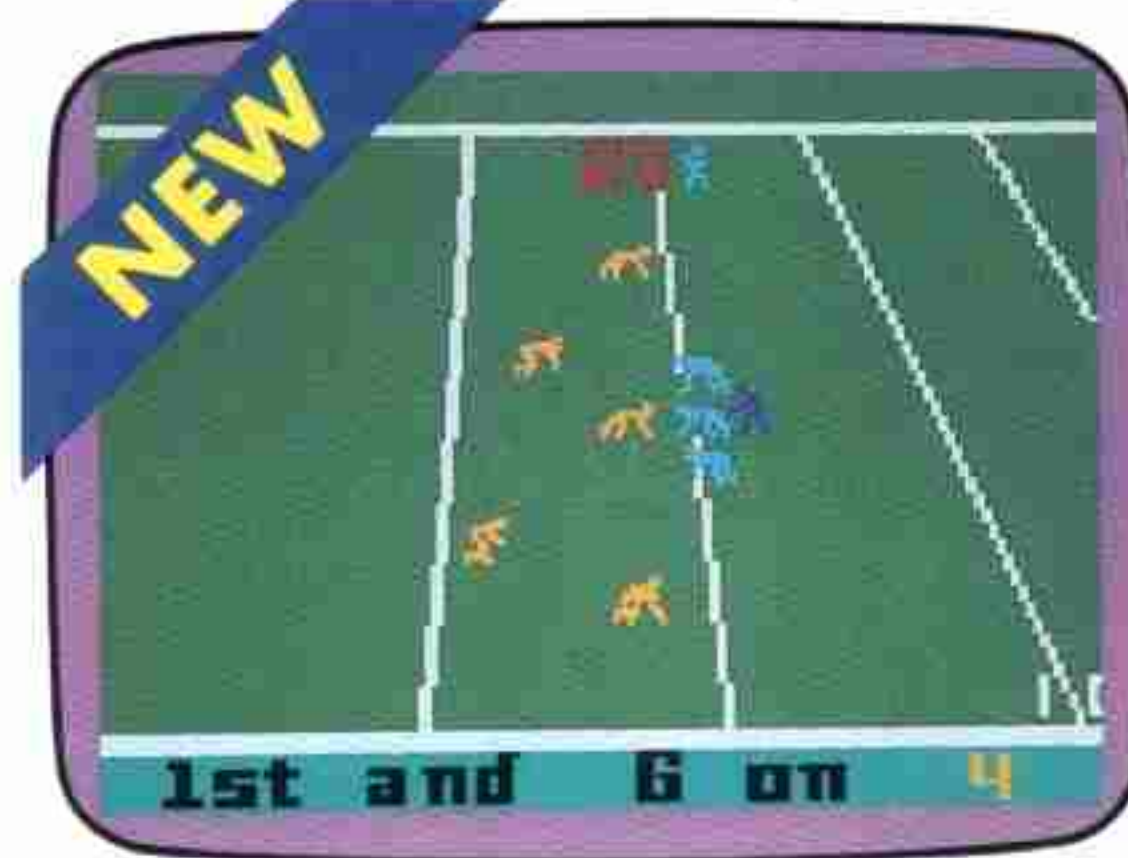
WORLD SERIES MAJOR LEAGUE BASEBALL™ 4537

The ultimate baseball game allows you to program batting and pitching statistics for the team of your choice and then watch them from various simulated TV-camera perspectives.



GAME FACTORY™ 4539

Create your own video game using built-in graphics and game play options. Finish the design of your custom game and challenge your friends.



SUPER NFL™ FOOTBALL (working title) 4696

So realistic you'll be checking for grass stains. This fast-paced game has penalties called and game stats displayed. Includes extra burst of speed for offensive players.



FLINTSTONES™ KEYBOARD FUN™ 4535

The Flintstones and their friends teach you useful Keyboard skills through an exciting, colorful videogame.



MIND STRIKE™ 4531

A strategy board game with unique graphics pits you against the computer. Choose from 50 playing boards or create your own.



JETSONS™ WAYS WITH WORDS™ 4543

The Jetsons' characterize this colorful action-packed videogame. You can improve spelling, reading and word recognition skills while having fun doing it.



NUMBER JUMBLE™ 4544

Add, subtract, multiply and divide at your own pace. The games get harder as you get smarter.



SCOOBY DOO'S™ MAZE CHASE™ 4533

You're Scooby Doo, chasing ghosts through a baffling maze, when suddenly you discover that you're the one being chased by an evil skull and crossbones.



MELODY BLASTER™ 4540

Based on the popular Astromash® game, learn how to play music by shooting falling notes in the pattern of a popular song. For use with the Music Synthesizer.

*Trademarks used under license from Major League Baseball Promotion Corporation.

** Trademark used under license from NFL Properties.

†JETSONS' and FLINTSTONES © 1983 Hanna-Barbera Production, Inc.

‡SCOOBY DOO © 1982 Hanna-Barbera Productions, Inc.

NOTE: We have made this catalog as complete as possible. Product illustrations, descriptions and availability are based upon information available at the printing date. Mattel Electronics reserves the right to make changes, without notice or obligation, to product specifications and/or availability. Current information should be obtained from your Mattel Electronics sales representative or your dealer before ordering or purchasing.

INTELLIVISION® GAMES

Intellivision games are known for superior graphics, captivating game play and unequalled challenge. The same qualities you find in arcade games.

And this year we've got quite a line-up. From the newest in our successful series of **ADVANCED DUNGEONS & DRAGONS™***

video games to the official videogame of the 1984 Winter Olympics, to a 3-dimensional game with 3-D glasses packed in... We've got the most going for us!

These games are so realistic you may have to remind yourself it's only a game.



ILLUSIONS (working title) 7743
The enchanted mirror splits you into multiple images. You must become whole before time runs out. Changing stairways and folding cubes with SuperGraphics try to keep you from safety.



PARTY LINE (working title) 7744
Three new games in one bring new dimensions to home entertainment. Designed for two teams or two players, choose from games featuring rollerskaters, construction workers, or flying saucers.



HOVER FORCE™ 3-D 7742
With 3-D glasses, you get a terrific perspective from your helicopter and can spot the terrorist locations throughout the city.



THUNDER CASTLE™ 4469
As a knight in shining armor, journey through the enchanted forest. Dragons, sorcerers and demons lurk in full SuperGraphic evilness. But you have the power to defeat them.



ALL STAR MAJOR LEAGUE BASEBALL™* 5789
Nine innings of action-packed baseball where you have to hit fastbreaking curve balls and smoking fastballs, as well as catch fly balls and grounders. Play a friend or the computer!



ADVANCED DUNGEONS & DRAGONS™*
TOWER OF MYSTERY (working title)
Cartridge 4692
Stuck on top of the Tower of Mystery, you must preserve your strength and protect the treasure as you attempt to escape.



GO FOR THE GOLD™† 7526
Four Intellivision sports hits in a single cartridge makes the "Official videogame of the 1984 Winter Olympics" a winner—play Skiing, Hockey, Basketball and Boxing.



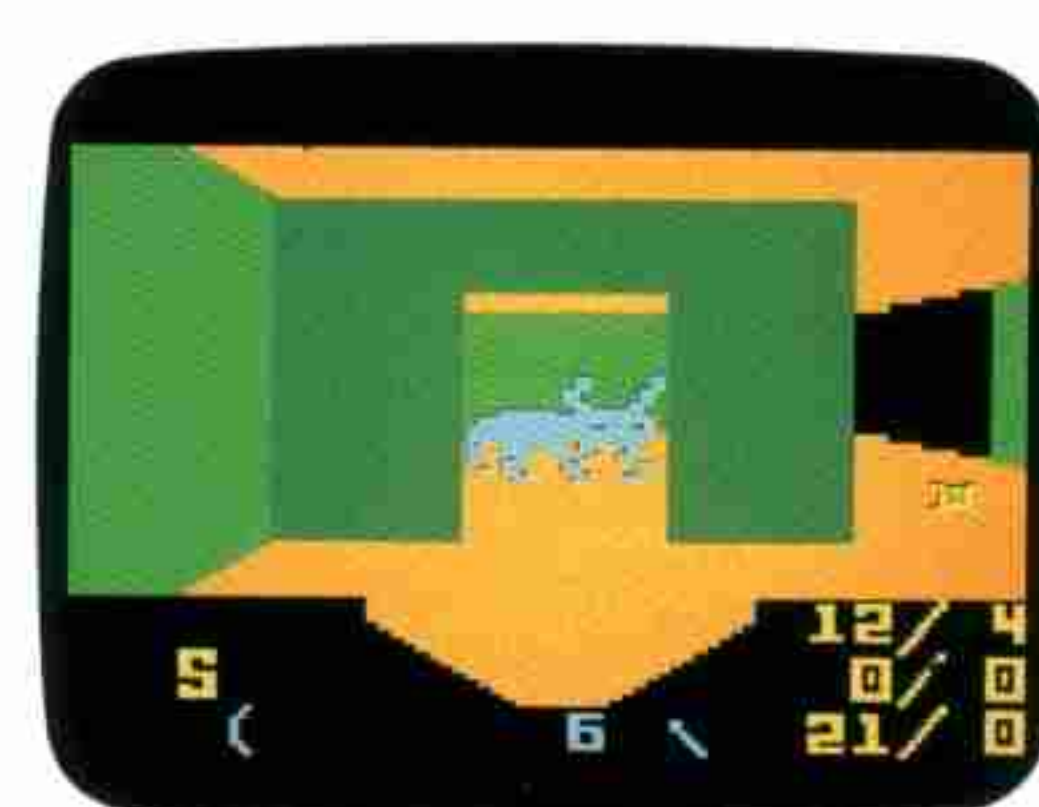
MASTERS OF THE UNIVERSE™†
THE POWER OF HE-MAN™ 4689
In this game based on the 1982 "Toy of the Year" male action series, you are He-Man and must make it to **CASTLE GRAYSKULL™** to defeat **SKELETOR™**.



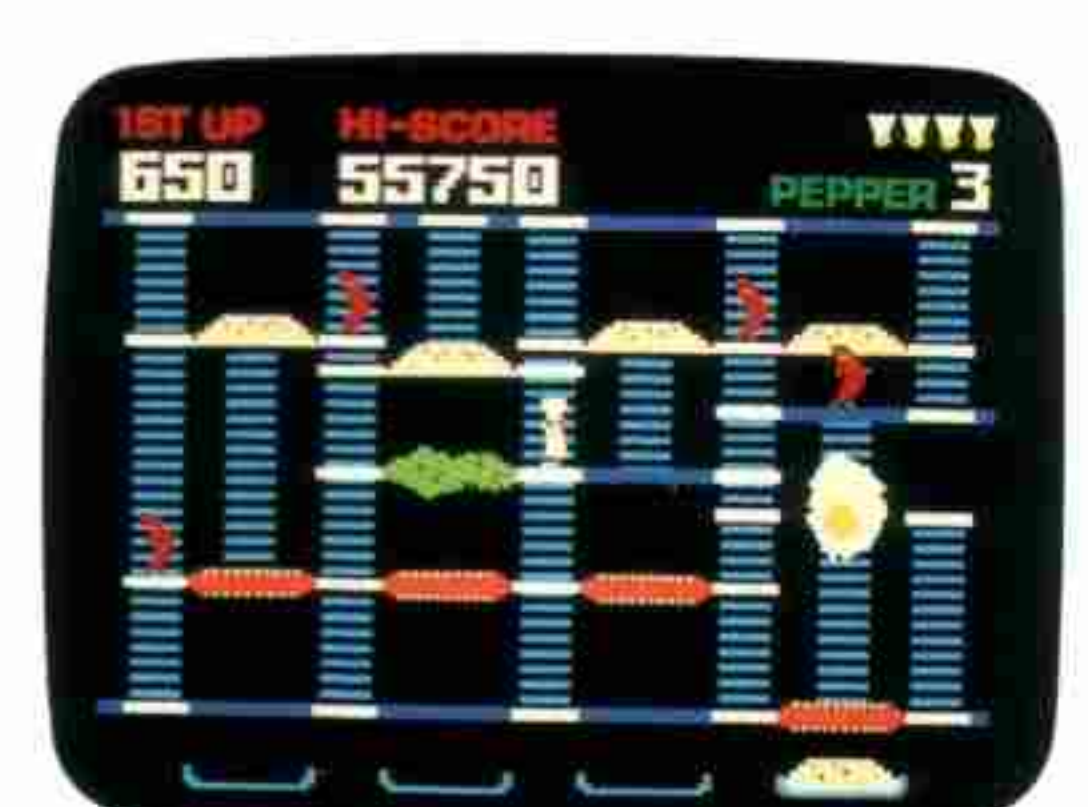
BUMP 'N' JUMP™△ 4688
If you can't bump 'em, you've got to jump 'em! It's the wackiest thing to happen to driving since the rush hour. Based on the arcade game.



MISSION X™△ 4437
You're flying a top secret bombing raid over enemy territory, and your mission is to wipe out enemy battleships, tanks, artillery guns and bridges! Based on the arcade game.



ADVANCED DUNGEONS & DRAGONS™△△
TREASURE OF TARMIN™△△
Cartridge 5300
Slay the dreaded Minotaur and capture Tarmin's treasure to win this strategy game. But finding the treasure is a task in itself!



BURGERTIME™△ 4549
As Chef **PETER PEPPER**, you are trying to build terrific hamburgers while menacing hot dogs, pickles and eggs are out to ruin your meal! Based on the arcade game.

ATARI® 2600 GAMES

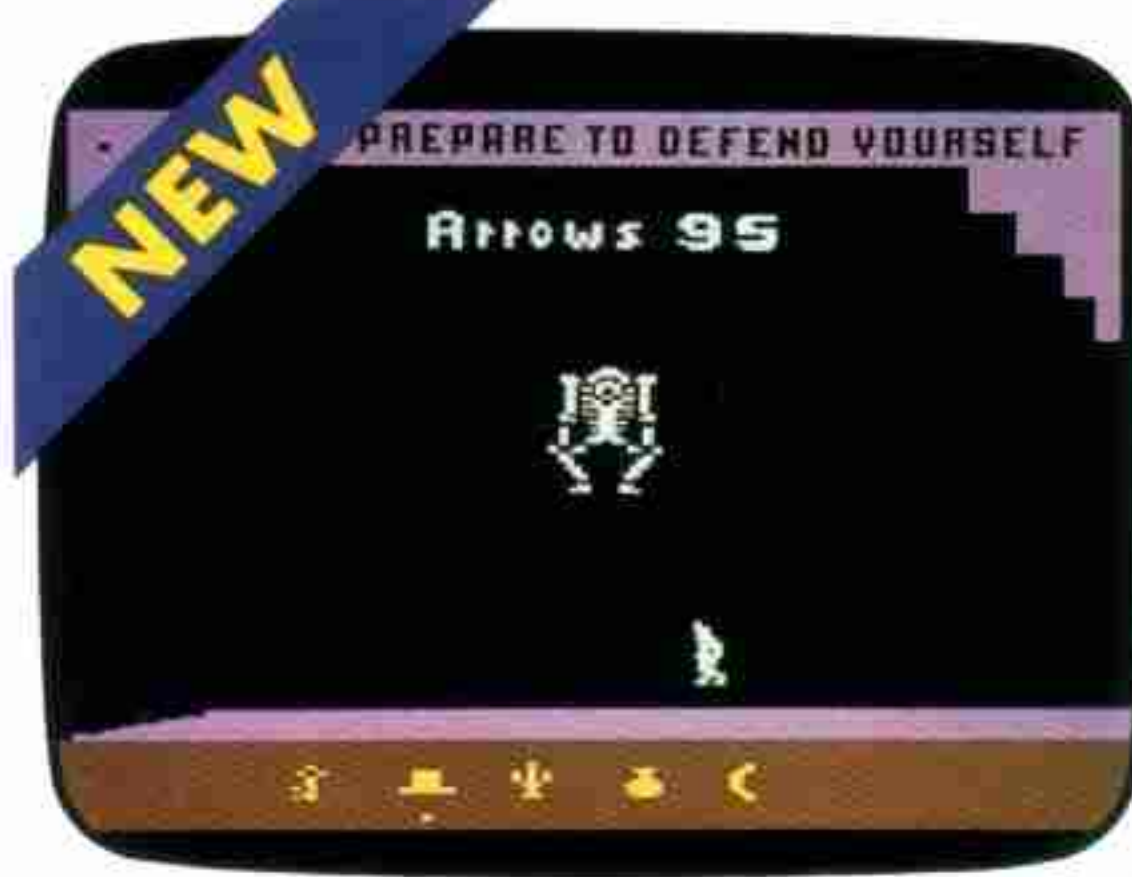
With games for Atari 2600, Mattel Electronics opens up a whole new world of video gameplay.

Gameplay with the same realism, action and sophistication that's made Intellivision games so popular.

And now we're introducing several sure winners including



ADVANCED DUNGEONS & DRAGONS™ **TREASURE OF TARMIN™** Cartridge 4325
Slay the dreaded Minotaur and capture Tarmin's treasure to win this strategy game. But finding the treasure is a task in itself!



ADVANCED DUNGEONS & DRAGONS™ **TOWER OF MYSTERY** (working title) Cartridge 7175
Stuck on top of the Tower of Mystery, you must preserve your strength and protect the treasure as you attempt to escape.



BURGERTIME™ 4518
As Chef PETER PEPPER, you are trying to build terrific hamburgers while menacing hot dogs, cheese and breadsticks are out to ruin your meal! Based on the arcade game.



MASTERS OF THE UNIVERSE™ **THE POWER OF HE-MAN™** 4319
In this game based on the 1982 "Toy of the Year" male action series, you are He-Man and must make it to CASTLE GRAYSKULL™ to defeat SKELETOR.™



BUMP 'N' JUMP™ 7045
If you can't bump 'em, you've got to jump 'em! It's the wackiest thing to happen to driving since the rush hour. Based on the arcade game.

COLECOVISION® GAMES

Now the expanding base of ColecoVision owners can play Intellivision hits! Our first introductions will be successful



BURGERTIME™ 7514
As Chef PETER PEPPER, you are trying to build terrific hamburgers while menacing hot dogs, pickles and eggs are out to ruin your meal! Based on the arcade game.



MASTERS OF THE UNIVERSE™ **THE POWER OF HE-MAN™** 7759
In this game based on the 1982 "Toy of the Year" male action series, you are He-Man and must make it to CASTLE GRAYSKULL™ to defeat SKELETOR.™

arcade games like **BURGERTIME™** and **BUMP 'N' JUMP™**, as well as **MASTERS OF THE UNIVERSE™**, **THE POWER OF HE-MAN™** and the phenomenal new **ILLUSIONS** (working title).



BUMP 'N' JUMP™ 7575
If you can't bump 'em, you've got to jump 'em! It's the wackiest thing to happen to driving since the rush hour. Based on the arcade game.



ILLUSIONS (working title) 7760
The enchanted mirror splits you into multiple images. You must become whole before time runs out. Changing stairways and folding cubes try to keep you from safety.

* ADVANCED DUNGEONS & DRAGONS is a trademark owned by and used under license from TSR, INC. This cartridge is approved by TSR, INC., the publisher of the "Fantasy Role-Playing Games" sold under the trademark ADVANCED DUNGEONS & DRAGONS. © 1983 TSR, INC. All Rights Reserved.

† Trademark used under license from Major League Baseball Promotion Corporation.

© 1982 OCOG Sarajevo 1984

‡ MASTERS OF THE UNIVERSE, HE-MAN, CASTLE GRAYSKULL and SKELETOR are trademarks owned by and used under license from Mattel, Inc.

△ BUMP 'N' JUMP, BURGERTIME and MISSION X are trademarks of DATA EAST USA, INC. used under license. © 1982 DATA EAST USA, INC.

▽ ADVANCED DUNGEONS & DRAGONS and TREASURE OF TARMIN are trademarks owned by and used under license from TSR, INC. This cartridge is approved by TSR, INC., the publisher of the "Fantasy Role-Playing Games" sold under the trademark ADVANCED DUNGEONS & DRAGONS. © 1982 TSR, INC. All Rights Reserved.

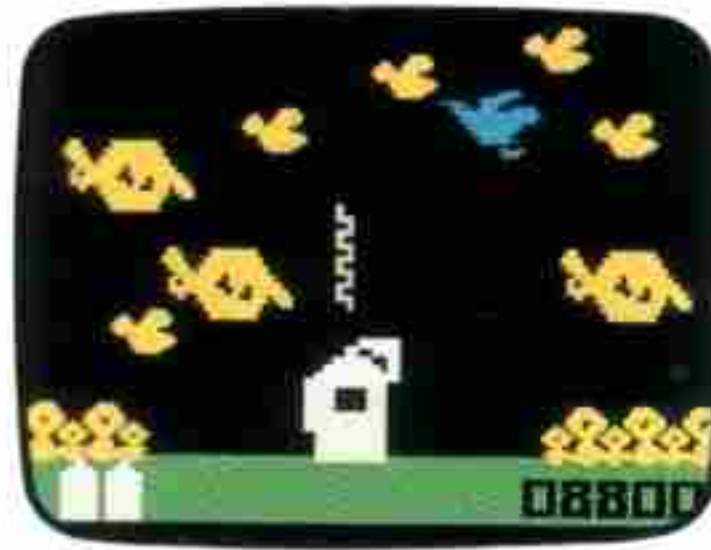
INTELLIVISION® CLASSICS



MOTOCROSS 3411



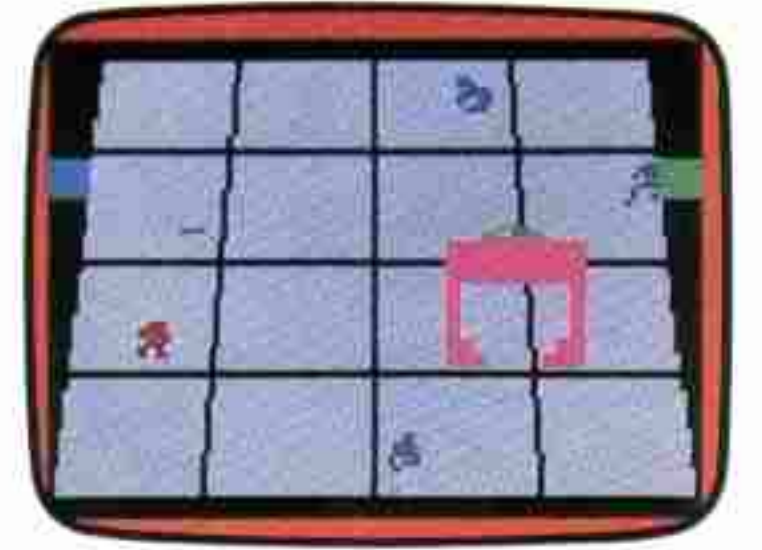
PINBALL 5356



BUZZ BOMBERS™ 4436



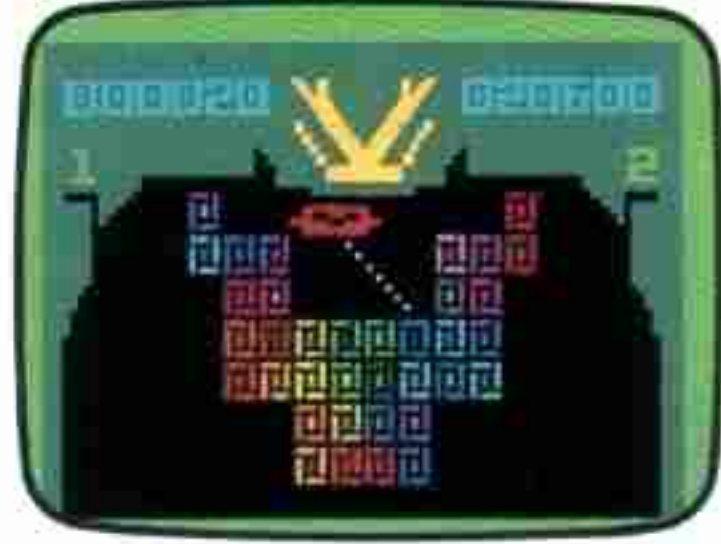
SHARK! SHARK!® 5787



TRON DEADLY DISCS® 5391



KOOL-AID MAN™** 4675



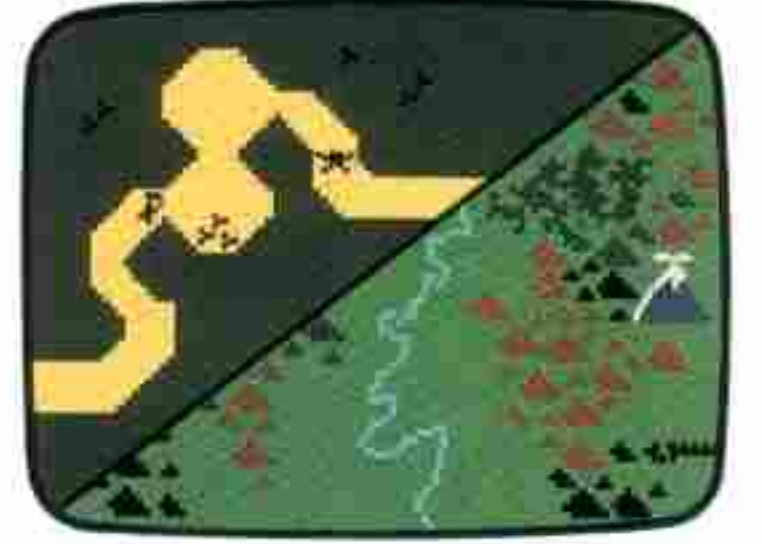
VECTRON™ 5788



LOCK 'N' CHASE™† 5637



NIGHT STALKER™ 5305



ADVANCED DUNGEONS & DRAGONS™: CARTRIDGE 3410



NFL[△] FOOTBALL 2610



MAJOR LEAGUE BASEBALL[△] 2614



NBA[△] BASKETBALL 2615



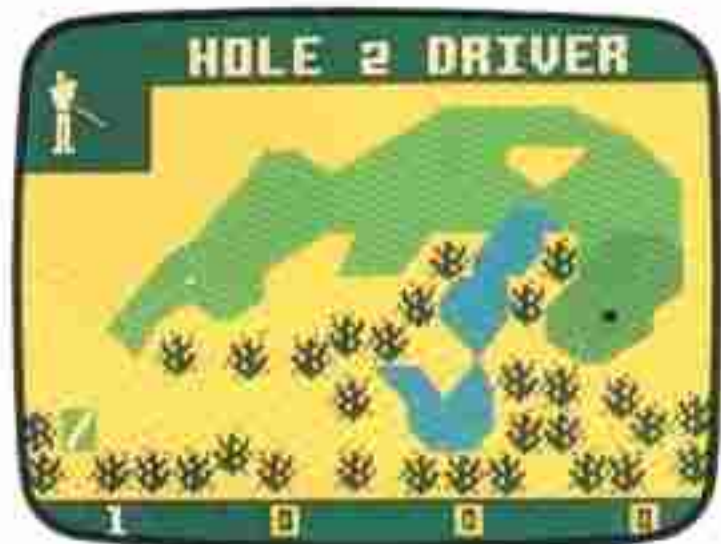
NHL[△] HOCKEY 1114



SKIING 1817



NASL[△] SOCCER 1683

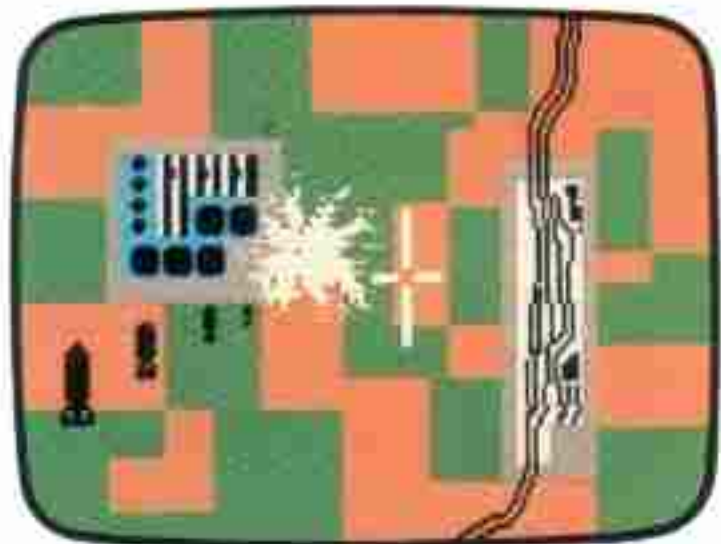


PGA[△] GOLF 1816

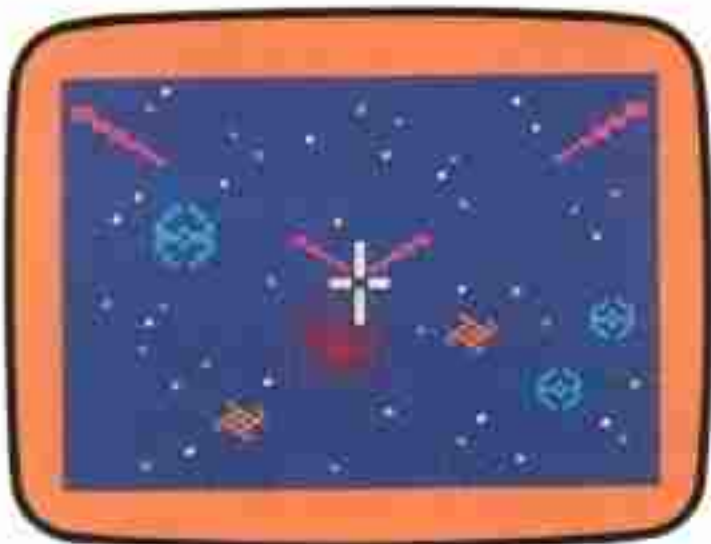
INTELLIVOICE®



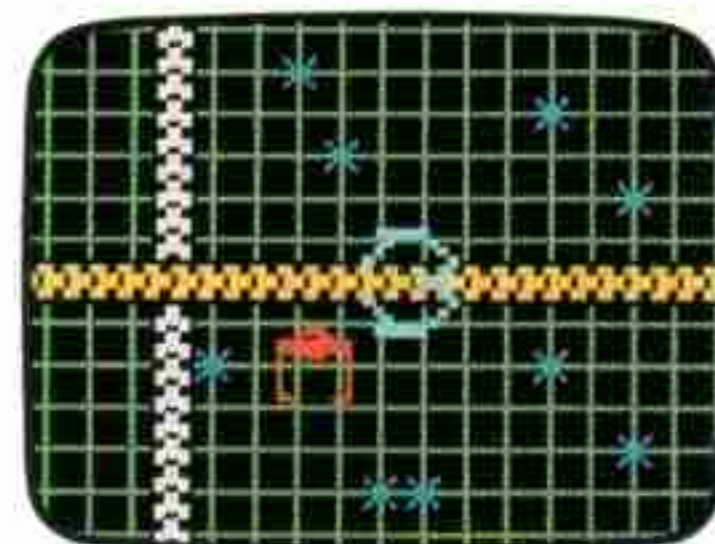
BOMB SQUAD® 3883



B-17[®] BOMBER 3884



SPACE SPARTANS™ 3416



TRON SOLAR SAILER® 5393



INTELLIVOICE™ 3330

ATARI® 2600 CLASSICS FROM MATTEL ELECTRONICS®



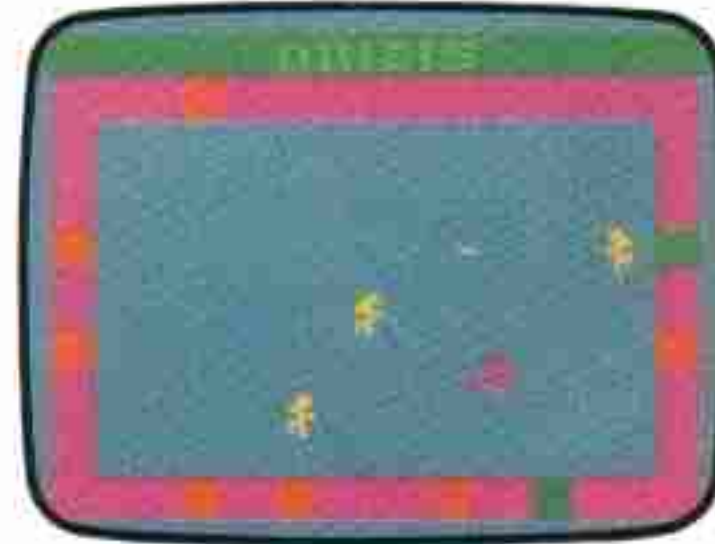
ADVENTURES OF TRON® 4317



KOOL-AID MAN™** 4648



SUPER CHALLENGE™ FOOTBALL 5658



TRON DEADLY DISCS® 5662



SUPER CHALLENGE™ BASEBALL 5665



AIR RAIDERS™ 5861

© 1982 Walt Disney Productions, Inc.

**KOOL-AID MAN™ is a trademark of General Foods Corporation. © 1983 General Foods Corporation.

†LOCK 'N' CHASE is a trademark of DATA EAST USA, INC., used under license. © 1981, 1982 DATA EAST USA, INC.

‡ADVANCED DUNGEONS & DRAGONS is a trademark owned by and used under license from TSR, INC. This cartridge is approved by TSR, INC., the publisher of the "Fantasy Role-Playing Games" sold under the trademark ADVANCED DUNGEONS & DRAGONS. © 1982 TSR, INC. All Rights Reserved.

△Trademark used under license from designated owners.

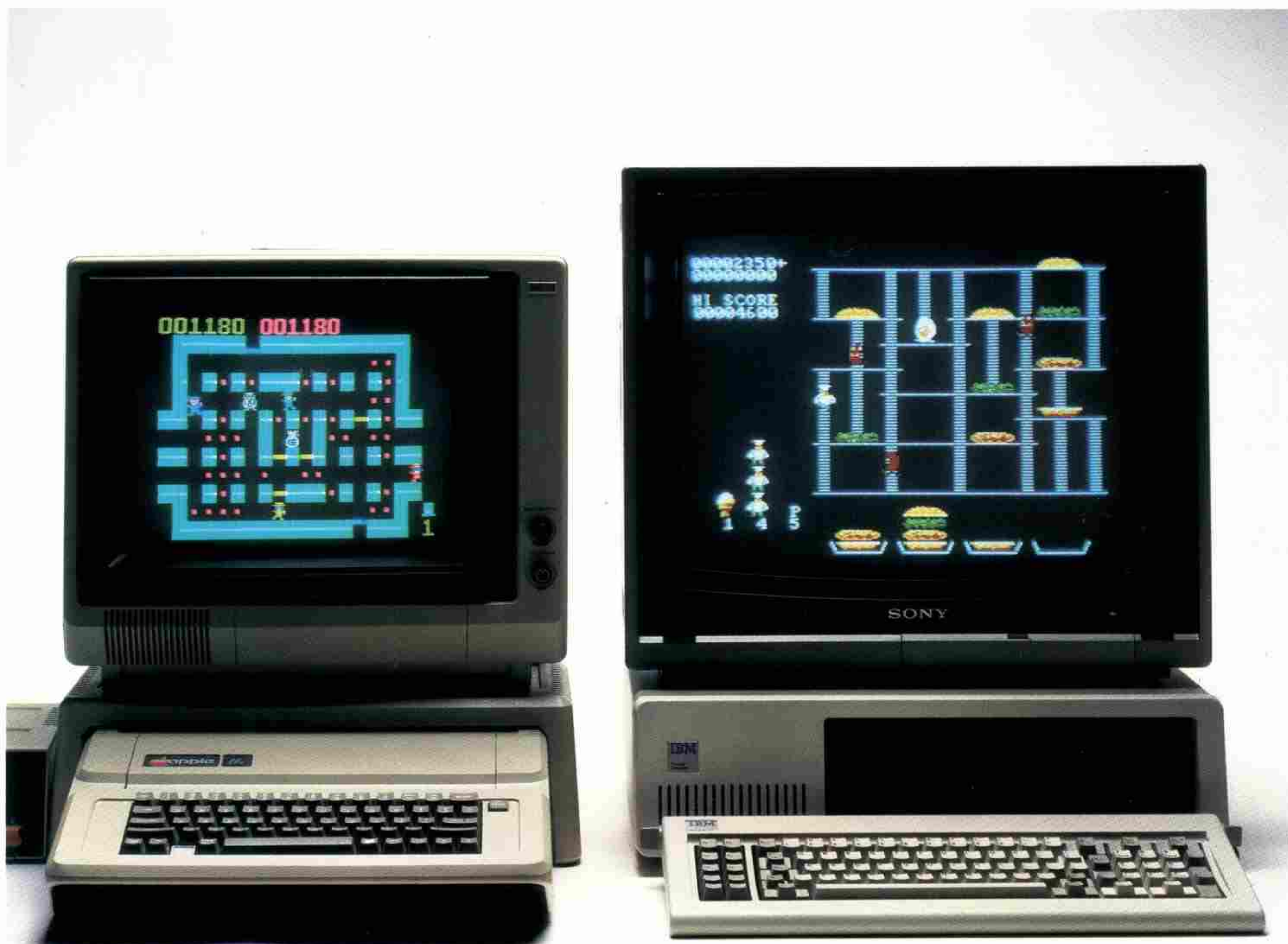
NOTE: We have made this catalog as complete as possible. Product illustrations, descriptions and availability are based upon information available at the printing date. Mattel Electronics reserves the right to make changes, without notice or obligation, to product specifications and/or availability. Current information should be obtained from your Mattel Electronics sales representative or your dealer before ordering or purchasing.

MATTEL ELECTRONICS[®]

HOME COMPUTER SOFTWARE

IBM[®] PC

APPLE[®] II, APPLE[®] II E AND II PLUS



SOFTWARE FOR IBM AND APPLE PERSONAL COMPUTERS.

Finally owners of IBM* and Apple** personal computers can have a little fun. With a new line of entertainment software, Mattel Electronics becomes one of the first video game manufacturers to make software that's compatible with the IBM Personal Computer and the Apple II, Apple II E and II Plus. So

you can turn your IBM or Apple computer into an advanced video entertainment system. With fast-paced action, super quality graphics and realistic game play.

Our most popular games now are available. Including BurgerTime™†, the sensational arcade game.

IBM



LOCK 'N' CHASE™‡ 4555
Maneuver your thief through the maze, picking up gold bars and avoiding the billyclub swinging cops.

IBM



BURGERTIME™† 4556
As Chef PETER PEPPER, you are trying to build terrific hamburgers while menacing hot dogs, pickles and eggs are out to ruin your meal! Based on the arcade game.

IBM



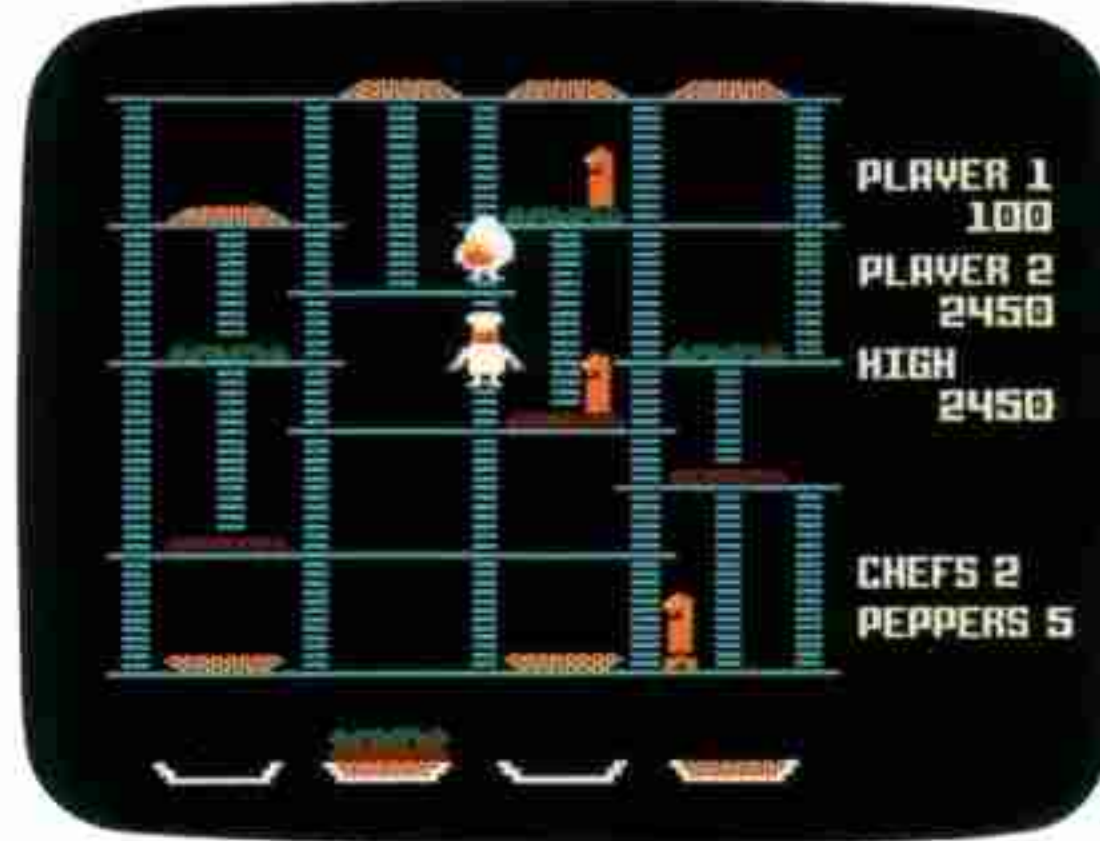
NIGHT STALKER™ 4553
Relentless robots have you on the run. You can hide in bunkers but watch out for dangerous spiders and bats.

APPLE



LOCK 'N' CHASE™‡ 4522
Maneuver your thief through the maze, picking up gold bars and avoiding the billyclub swinging cops.

APPLE



BURGERTIME™† 4519
As Chef PETER PEPPER, you are trying to build terrific hamburgers while menacing hot dogs, pickles and eggs are out to ruin your meal! Based on the arcade game.

APPLE



NIGHT STALKER™ 4524
Relentless robots have you on the run. You can hide in bunkers but watch out for dangerous spiders and bats.

APPLE



PIRATES OF THE NILE™ 7747
Travel through the catacombs of the pharaoh's ancient tomb to uncover the hidden treasure. Avoid guardian spirits as you return to your ship.

APPLE



HEAVY ARTILLERY™ 7748
Direct your forces to capture the opposing base. Map out your strategy and go to battle.

*IBM is a trademark of International Business Machines, Corp.

**Apple is a trademark of Apple Computer, Inc.

†BURGERTIME is a Trademark of DATA EAST USA, INC. used under license. © 1982 DATA EAST USA, INC.

‡LOCK 'N' CHASE is a Trademark of DATA EAST USA, INC. used under license. © 1981, 1982 DATA EAST USA, INC.

NOTE: We have made this catalog as complete as possible. Product illustrations, descriptions and availability are based upon information available at the printing date. Mattel Electronics reserves the right to make changes, without notice or obligation, to product specifications and/or availability. Current information should be obtained from your Mattel Electronics sales representative or your dealer before ordering or purchasing.

INFORMATION

© Mattel Electronics, Inc. 1984
Hawthorne, CA 90250
PRINTED IN U.S.A. All Rights Reserved.